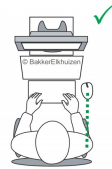


M-board 870 Bluetooth Keyboard



Research

Compact keyboard (keyboards without separate numeric keys at the right side) decrease the reach distance to the mouse (Cook, et al, 1998), decrease the strain on the forearms and are found to be more comfortable than standard keyboards (van Lingen, et al, 2003).

1



1. Works with laptop and tablet
2. Multi-pairing technology
3. Compact

2



3



Wireless: Bluetooth 3.0 technology (compatible with iOS, Android and Windows)

Multi-pairing: quick switching between typing on laptop, tablet or smartphone

Ergonomic: effective keystrokes and feedback due to scissor mechanism instead of membrane

Mobile: only 2 cm 'thick' and light in weight

Compact: reduces reaching distance to the mouse

Specifications

Dimensions:	286 x 19 x 132 mm (W x D x H)
Weight:	368 g
Product code:	BNEM870BUS (Multiple versions)



Health & Safety Regulations

The distance between the keys should be between 18 and 20 mm (ISO 9241). The alpha numeric keys of the keyboard have to be separate from the function keys (ISO 9241). Dark keys on a light colour background make reading easier and increases productivity (Snyder, 1990). The middle row of the keys may not be higher than 30 mm, measured from the desk (DIN 2137). The keyboard should have the ability to tilt and be separate from the screen so as to allow the worker to find a comfortable working position thereby avoiding strain in the arms or hands. (Council Directive 90/270/EEC).